

PRECINCT

UNSEALED EXTERNAL RECESSED

Tel: 0121 521 4500 Fax: 0121 521 4551 Email: sales@steelwaybrickhouse.co.uk www.steelway.co.uk

Steelway Precinct range of high quality access covers are available to suit a multitude of applications and infill materials. These ranges are fabricated to the highest of standards to ensure continued performance under load. The Precinct range of products are ideally suited for use over telecommunications chambers that require frequent easy access to below ground services.

Standard Features

- Kitemarked to EN124 B125 on sizes up to and including 710mm clear opening
- Full range of FACTA loadings available on non kitemarked units
- Slide out design on all kitemarked products
- All ranges are load tested unfilled
- Plain seated - unsealed
- Solid lifting bosses
- Tapered cover sides to prevent jamming in the frame
- 6mm thick mild steel to prevent distortion under load
- Fully flanged frame for ease of installation and stability
- Suitable for infill materials up to 65mm on kitemarked units
- Suitable for infill materials up to 100mm on non kitemarked units
- Galvanised to BSEN ISO1461

Additional Features

/A FACTA A loading
 /B FACTA B loading
 /C FACTA C loading
 /D FACTA D loading
 /65 65mm block depth
 /80 80mm block depth
 /100 100mm block depth
 /BADGES Any badging requirement up to 6 characters
 /L2 2no Locking bolts per cover section
 /RE Internal cover reinforcing rods for concrete or other non block finishes
 /140G 140 micron galvanizing
 /SS Full fabrication in stainless steel

Size Range

Kitemarked up to 710mm clear opening span and non kitemarked to suit any chamber dimensions.

Lifting Keys

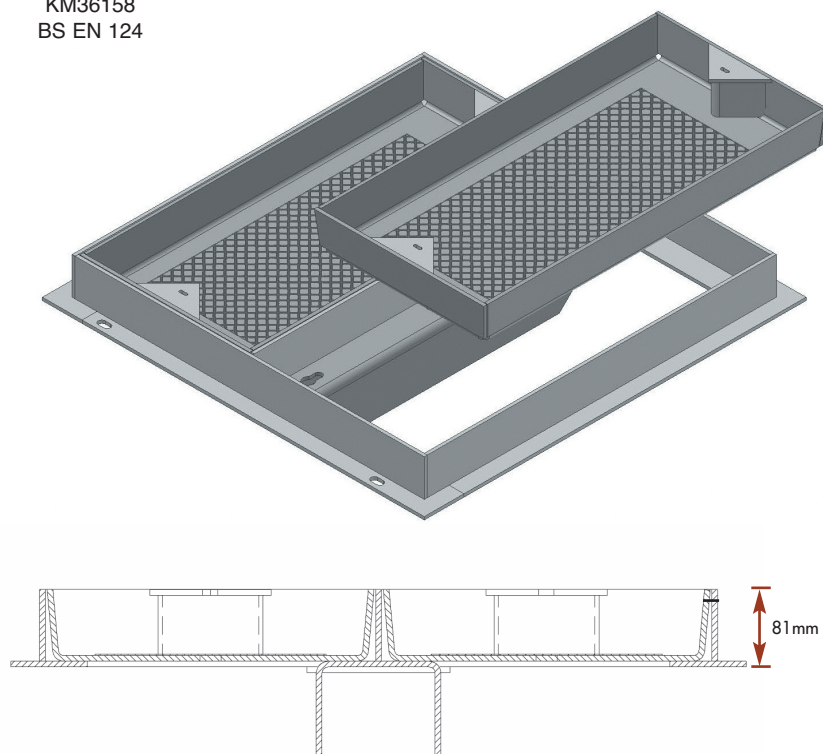
Fig BSF/KEY Over centre lifting key
 Please note that due to the nature of the product mechanical lifting may be required on non kitemarked units



KM36158
BS EN 124

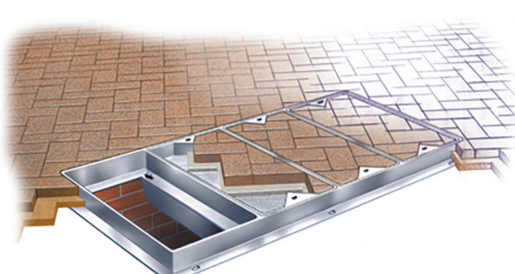
AVAILABLE LOADINGS EN124 B125 KITEMARKED UP TO 710mm

FACTA A B C D NOT KITEMARKED



PRODUCT REFERENCES

Fig 630L	Chamber 2	725 x 255mm clear opening	EN124 B125
Fig 631L	Chamber 4	915 x 445mm clear opening	EN124 B125
Fig 632L	Chamber 5	610 x 610mm clear opening	EN124 B125
Fig 633L	Chamber 6	1310 x 610mm clear opening	EN124 B125
Fig 634L	Chamber 10	2285 x 710mm clear opening	EN124 B125
Fig 635L	Chamber 11	1690 x 710mm clear opening	EN124 B125
Fig 636L	Chamber JC1	960 x 610mm clear opening	EN124 B125
Fig BSF		All other opening sizes (please specify)	EN124 B125
Fig BSF/KEY		Over centre lifting key	



Example Specification

Fig 633L = Kitemarked B125 loading / 1310 x 610mm clear opening /65 block

Fig BSF1200500/D/80/L2/ELEC = 1200 x 500mm clear opening / FACTA D loading / 80mm block / Locking / Badged ELEC